

In partnership with  
Lake Washington PTSA

# Advocacy *in* Education

From the Classroom to the Capital

Lindsey Yocum (she/her)  
LWSD Parent & LWSD School Board Director

Amy Falcone (she/her)  
LWSD Parent & Kirkland City Councilmember

# Introduction

---

- Who are we?
- Who are you?



# Purpose

**"Our purpose, in collaboration with LWPTSA, is to meet community members where they are on their advocacy journey, providing education, empowerment, and encouragement to help them become effective advocates for all children and inspire others to do the same."**

**This is an opportunity for us to learn how to positively impact the larger educational system.**

# Plan for 2025 School Year

- |          |  |
|----------|--|
| January  | <ul style="list-style-type: none"><li>• Passion drives advocacy</li><li>• Advocacy at different levels within the educational system</li></ul> |
| February | <ul style="list-style-type: none"><li>• Canceled due to weather</li></ul>  |
| March    | <ul style="list-style-type: none"><li>• LWSD organization overview</li></ul>   |
| April    | <ul style="list-style-type: none"><li>• School funding 101</li></ul>   |
| May      | <ul style="list-style-type: none"><li>• Advocating with state agencies and elected leaders</li></ul>   |

# Plan for Today



## Presentation & Questions (1 hour)

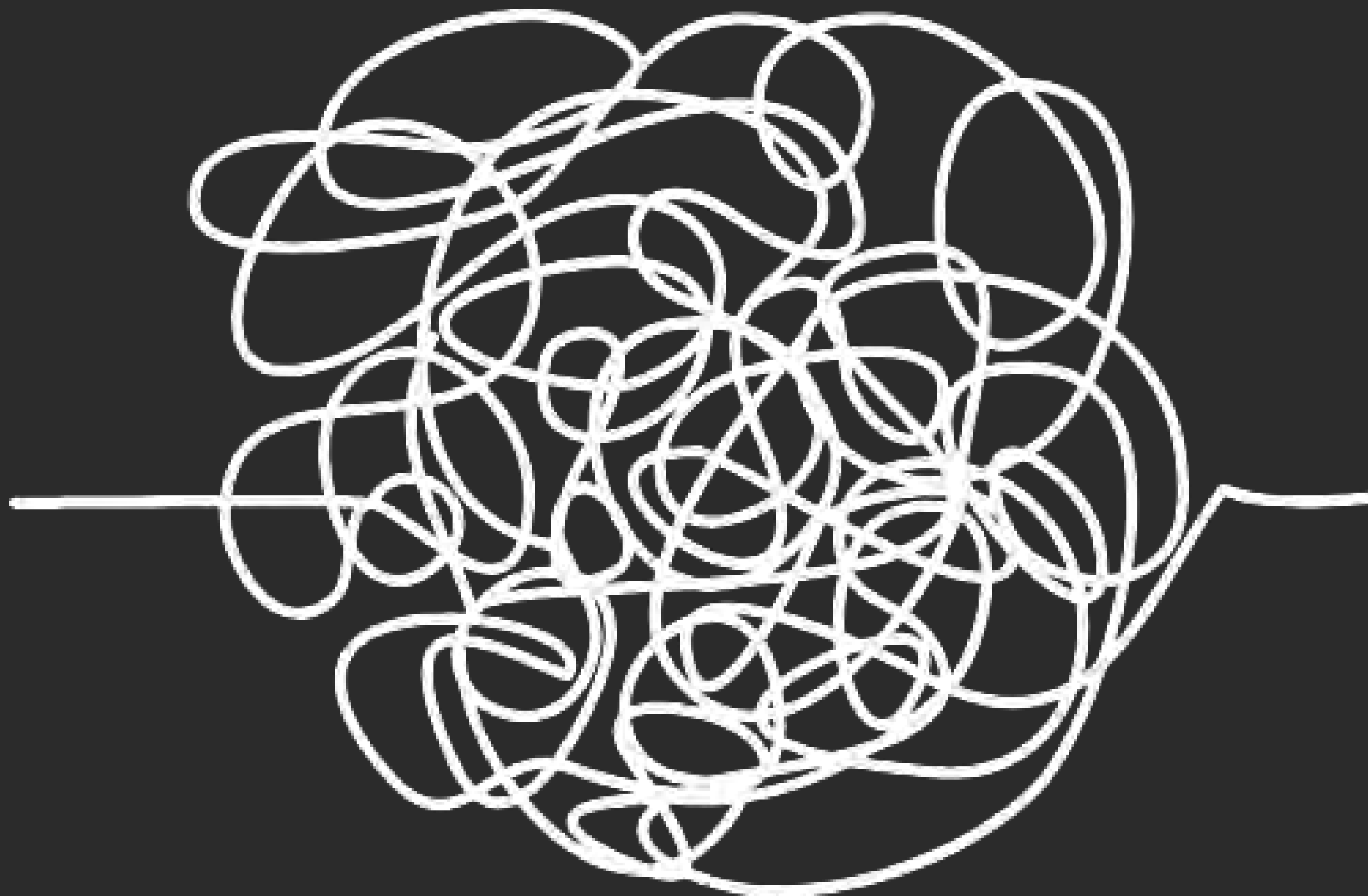
- Basic overview of school funding
- Funding advocacy



## Connecting & Collaborating (30 minutes)

Public School Funding is...

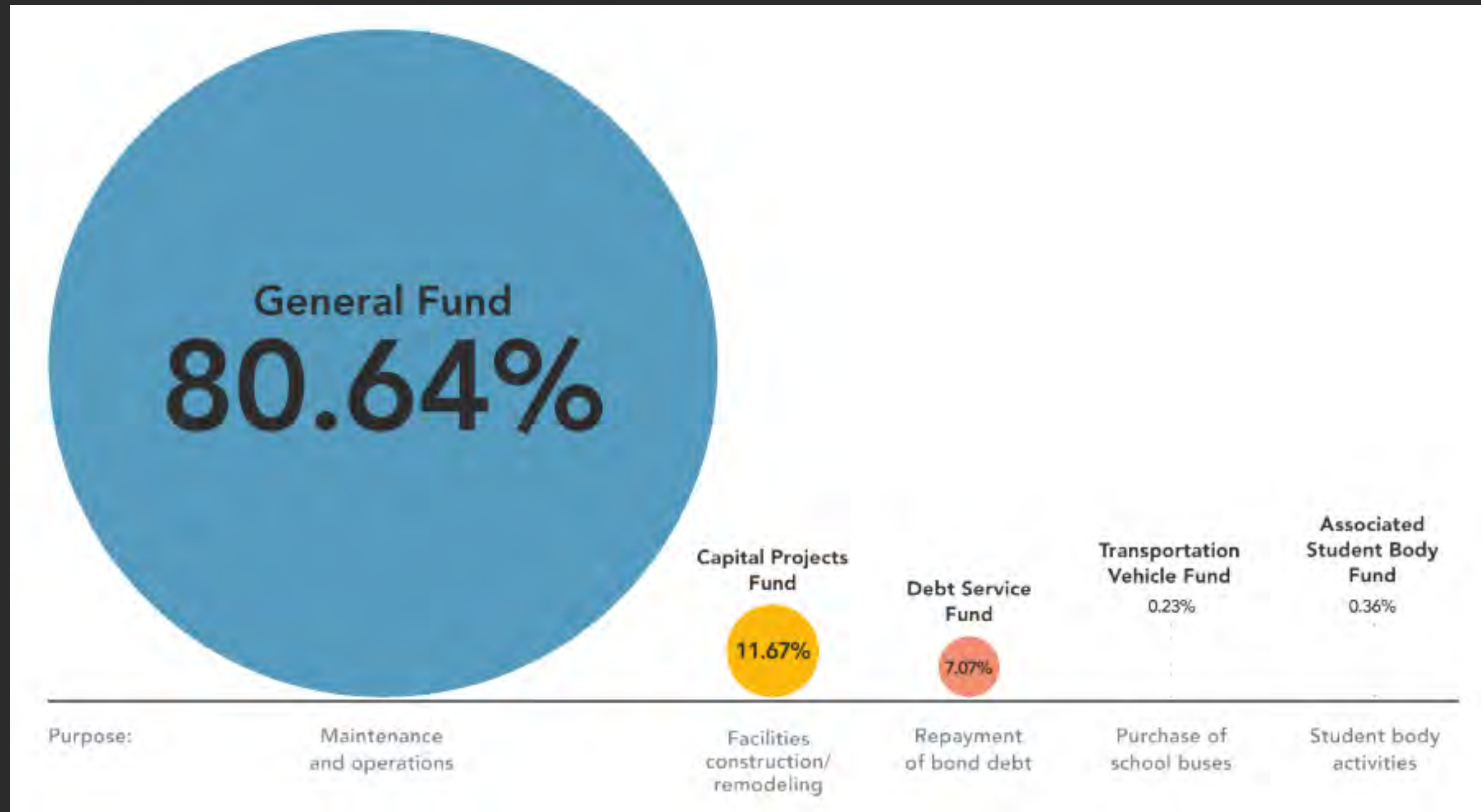
**COMPLICATED**





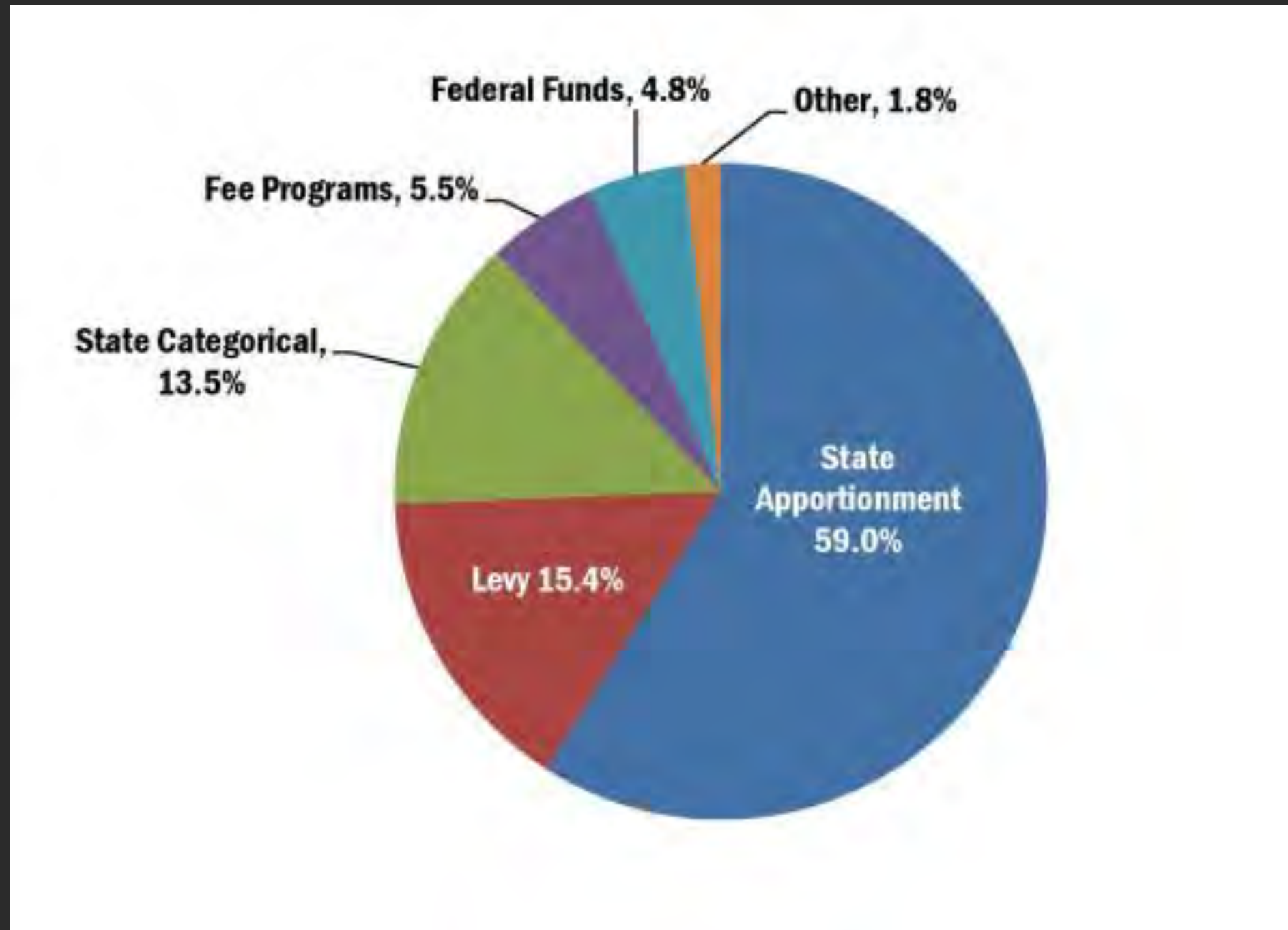
# HOW SCHOOLS SPEND MONEY

## 5 Funds



# SOURCES OF FUNDING: GENERAL FUND

## LWSD 2024-2025 General Fund Revenues





# SOURCES OF FUNDING: GENERAL FUND



## Revenue Sources

### State Apportionment - 59.0%

Provides the largest portion, 59.0 percent, of Lake Washington School District's general fund revenue. Apportionment is otherwise known as state general purpose funding. The amount is determined by the number of students attending our schools and a series of formula factors including legislatively set base salaries, employee benefits and non-labor allocations.

### Levy - 15.4%

Provides 15.4 percent of budgeted revenues. Levy amounts are capped by the legislature and must be approved by Lake Washington District voters at a special election.

### State Categorical - 13.5%

Provides 13.5 percent of budgeted revenues. These are categorical funds that come from the state for programs such as special education, pupil transportation, English Learners education, learning assistance, and education enhancements. Most of these revenues are given for a specific program and are not available for other purposes.

### Fee Programs - 5.5%

Generates 5.5 percent of local non-tax funds for programs such as sales of school lunches, extended day care, athletic participation and preschool. Also included are investment interest earnings and donations.

### Federal Funds - 4.8%

Comprises 4.8 percent of our revenues. These monies fund programs such as Title I and Head Start. They also provide supplemental funding for special education programs and support free and reduced lunches in the nutrition services program. These revenues may only be used for their specific program purpose.

### Other School District, Agencies & Financing Sources - 1.8%

Payments from other districts for participation in joint programs, grants from other non-state agencies and transfers from the Capital Levy for Technology Training & Applications, accounts for 1.8 percent of budgeted revenues.

# FEDERAL FUNDING

General Fund Revenues		
Category	Budget	Percentage
State Apportionment	\$ 352,436,473	59.0%
State Categorical	80,805,104	13.5%
Levy	91,677,330	15.4%
Federal Funds	28,582,242	4.8%
Fee Programs	32,959,822	5.5%
Other School Districts, Agencies, Financing Sources	10,585,188	1.8%
<b>TOTAL REVENUES</b>	<b>\$597,046,159</b>	<b>100.0%</b>

# FEDERAL FUNDING: GRANTS

## 1. Title 1

- Department of Education program
- Supports low-income students
- Based on number of students who qualify for free and reduced lunch

## 2. Special Education

- Department of Education program
- Federal law (IDEA) originally stated that the US would fund 40% of special education costs.  
It's currently around 9%.

## 3. Head Start

- Department of Health and Human Services program
- Provides early childhood education (preschool)
- Services to low-income children and families.

## 4. Free & Reduced Lunch

- Food and Nutrition Service (FNS) through United States Department of Agriculture (USDA)



# FEDERAL FUNDING

## Rank Order by Average Federal Allocation Per Pupil Revenue

Lake Washington School District has the lowest federal allocation of per pupil revenue among peer districts.

Difference:

- Seattle + \$1,080
- Bellevue + \$289
- Issaquah + \$63
- Northshore + \$184

4/7/2025 LWSD Board Presentation

	Size Ran	Federal Rank	Federal
Spokane	3	1	\$2,714
Highline	18	2	\$2,671
Kennewick	16	3	\$2,499
Tacoma	4	4	\$2,496
Kent	5	5	\$2,490
Yakima	20	6	\$2,427
Federal Way	10	7	\$2,282
Renton	23	8	\$2,197
Bethel	11	9	\$1,881
Auburn	19	10	\$1,823
Vancouver	9	11	\$1,684
Evergreen	6	12	\$1,652
Pasco	17	13	\$1,599
Marysville	32	14	\$1,505
Seattle	1	15	\$1,505
Puyallup	7	16	\$1,094
Everett	12	17	\$1,083
Edmonds	13	18	\$1,038
Bellevue	15	19	\$714
Northshore	8	20	\$609
Issaquah	14	21	\$488
LWSD	2	22	\$425



# LOCAL FUNDING

## Rank Order by Average Local Allocation Per Pupil Revenue

Lake Washington School District has the 4<sup>th</sup> highest local allocation of per pupil revenue among peer districts.

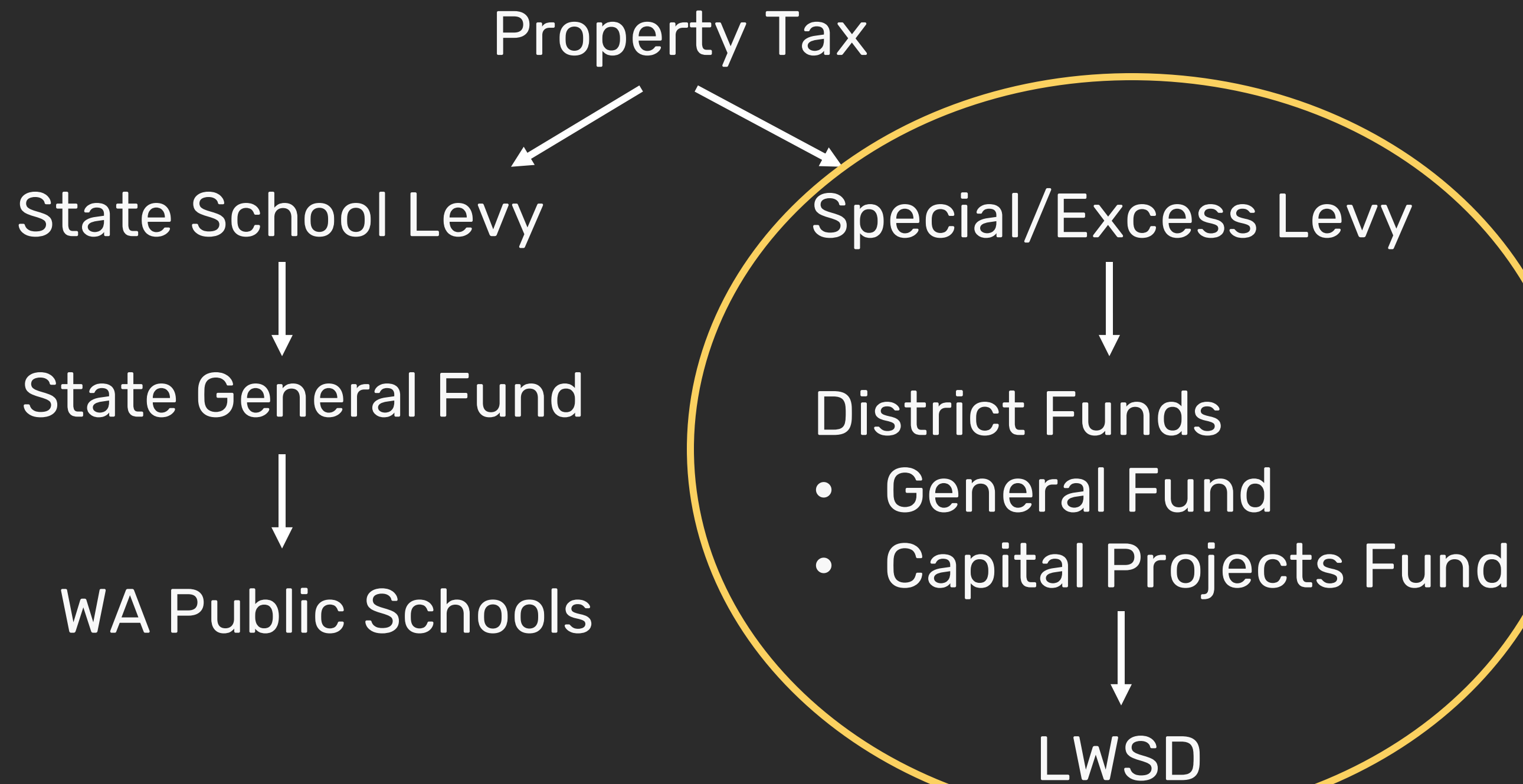
Difference:

- Seattle + \$782
- Bellevue + \$677
- Issaquah + \$763
- Northshore - \$119

	Size Ran	Local Ran	Loc
Seattle	1	1	\$4,262
Issaquah	14	2	\$4,243
Bellevue	15	3	\$4,157
LWSD	2	4	\$3,480
Edmonds	13	5	\$3,456
Highline	18	6	\$3,366
Everett	12	7	\$3,363
Northshore	8	8	\$3,361
Spokane	3	9	\$3,184
Kent	5	10	\$3,152
Renton	23	11	\$3,101
Tacoma	4	12	\$3,071
Puyallup	7	13	\$3,058
Auburn	19	14	\$2,848
Vancouver	9	15	\$2,735
Bethel	11	16	\$2,196
Evergreen	6	17	\$2,101
Federal Way	10	18	\$2,070
Marysville	32	19	\$1,763
Pasco	17	20	\$1,375
Yakima	20	21	\$1,193
Kennewick	16	22	\$885

# LOCAL FUNDING??

When we think of local funding, we often think of local levies that LWSD voters approve.





# LOCAL FUNDING: SPECIAL LEVIES



General Fund  
15.4% of revenue from levies



Capital Projects Fund  
96% of revenue from levies

# LOCAL FUNDING: CAPITAL PROJECTS FUND

## 1. Construction Levy

- New construction or renovation  
*November 2024 Levy—\$677 million over 6 years*

## 2. Technology and Capital Projects Levy

- Technology for students, staff, and classroom
- Technology systems to support our schools
- Replacing aging building systems
- School campus improvements
- Health and safety improvements  
*February 2022 Levy—about \$44.3 million over 4 years*

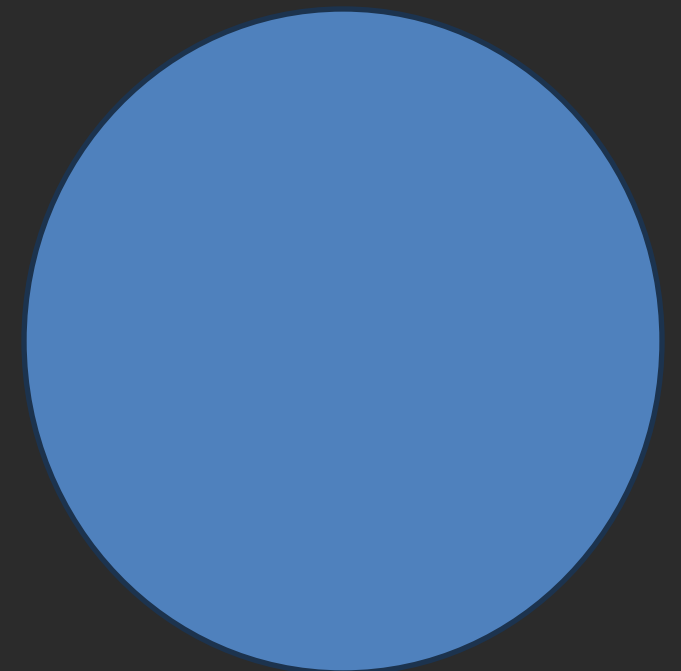


# LOCAL FUNDING: GENERAL FUND

## 3. Educational Programs and Operations (EP&O) Levy

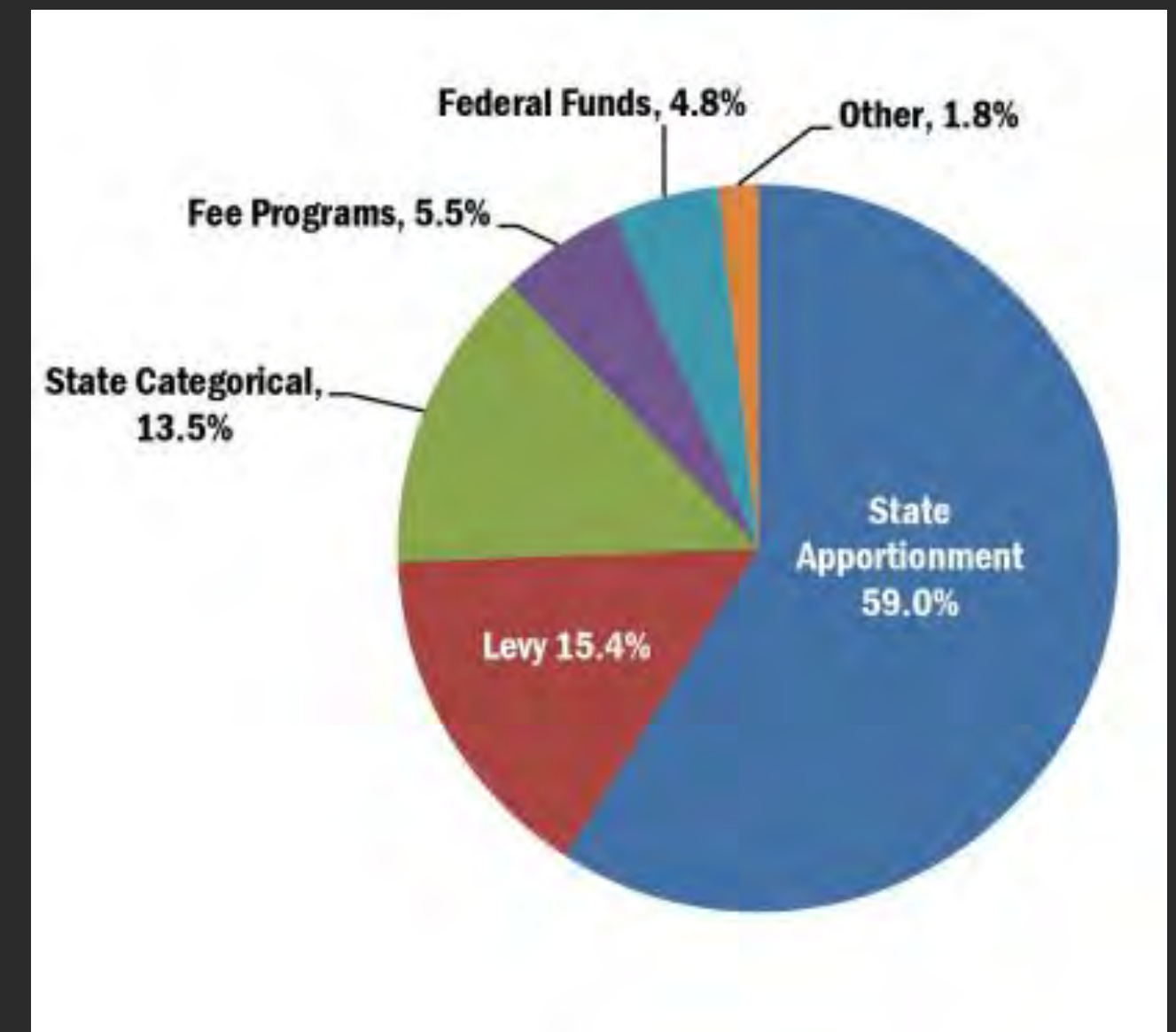
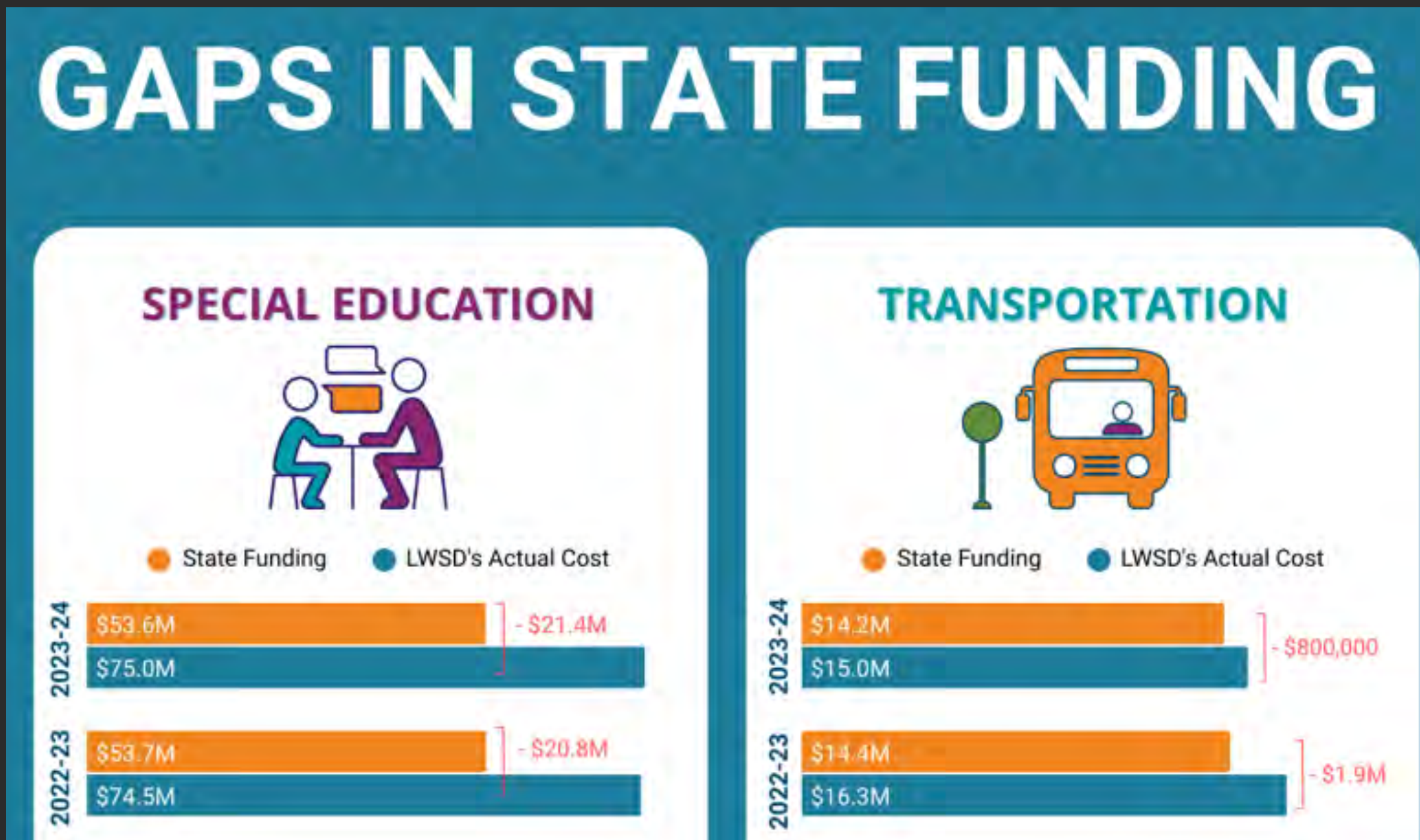
- Staffing for programs
- Safety and security
- Professional learning
- athletics & extracurricular activities
- additional course offerings
- early learning programs

*February 2022 EP&O Levy—about \$92.3 million a year for 4 years*



# LOCAL FUNDING: GENERAL FUND

Levies are not intended to be used for basic education needs, but sometimes they are. Why?



# LOCAL FUNDING: FUNDRAISING



In response to gaps in school funding, our PTAs—originally focused on advocacy—have taken on the role of fundraising out of necessity.

This shift has highlighted a troubling reality: differences in family resources mean that students at some schools have access to far more educational and enrichment opportunities than others.

Pause and consider this:

How has PTAs shift from advocacy to fundraising deepened inequities among students—not just in our district, but across the region and state?



# STATE FUNDING

## Rank Order by Average State Allocation Per Pupil Revenue

Lake Washington School District has the 3<sup>rd</sup> lowest state allocation of per pupil revenue among peer districts.

Difference:

- Seattle + \$1,462
- Bellevue + \$59
- Issaquah - \$30
- Northshore + \$385

4/7/2025 LWSD Board Presentation

	Size Ran	State Ran	Stat
Marysville	32	1	\$15,313
Highline	18	2	\$15,310
Renton	23	3	\$14,965
Seattle	1	4	\$14,847
Federal Way	10	5	\$14,687
Kent	5	6	\$14,684
Everett	12	7	\$14,611
Edmonds	13	8	\$14,441
Auburn	19	9	\$14,351
Yakima	20	10	\$14,171
Evergreen	6	11	\$14,164
Tacoma	4	12	\$14,152
Bethel	11	13	\$13,816
Northshore	8	14	\$13,770
Pasco	17	15	\$13,718
Vancouver	9	16	\$13,572
Kennewick	16	17	\$13,472
Bellevue	15	18	\$13,444
Spokane	3	19	\$13,411
LWSD	2	20	\$13,385
Issaquah	14	21	\$13,355
Puyallup	7	22	\$13,339



# STATE FUNDING: STATE GENERAL FUND

## Where Does the Money Come From?

Revenue Source	2021-23	
Retail Sales Tax	\$30,615	50.30%
Business and Occupation Tax	11,896	19.50%
Property Tax	8,933	14.70%
Real Estate Excise Tax	3,106	5.10%
All Other	6,330	10.40%
<b>Total</b>	<b>60,880</b>	<b>100%</b>

## Where Does the Money Go?

Revenue Source	2021-23	
Public Schools (K-12)	\$24,617	49.7%
Higher Education	3,548	7.2%
Human Services	16,326	33.0%
General Government, Legislative, Judicial	1,292	2.6%
Natural Resources	535	1.1%
Other	3,177	6.4%
<b>Total</b>	<b>49,494</b>	<b>100%</b>

# STATE FUNDING

Figure 23: State Appropriations for 2021–22 Fiscal Year

2022 State Fiscal Year	Total (millions)	Percent of Total
Basic Education	\$9,698	73.6%
Special Education	1,465	11.1%
Student Transportation	605	4.6%
Learning Assistance Program (LAP)	449	3.4%
Local Effort Assistance (LEA)	297	2.3%
Bilingual Education	217	1.7%
Education Reform	134	1.0%
State Office (OSPI) Statewide Programs	101	0.8%
Compensation Increase	97	0.7%
Highly Capable (Gifted)	32	0.2%
State Administration	32	0.2%

# STATE FUNDING

How does the state distribute funds to districts?

## Prototypical School Funding Model

"The prototypical model does not meaningfully include student voices or measure student needs, creating a funding system untethered from the goal of K-12 education."

*Oliver Treanor Miska, 33, is a queer educator, community organizer, and lobbyist for educational justice policy in Washington State.*



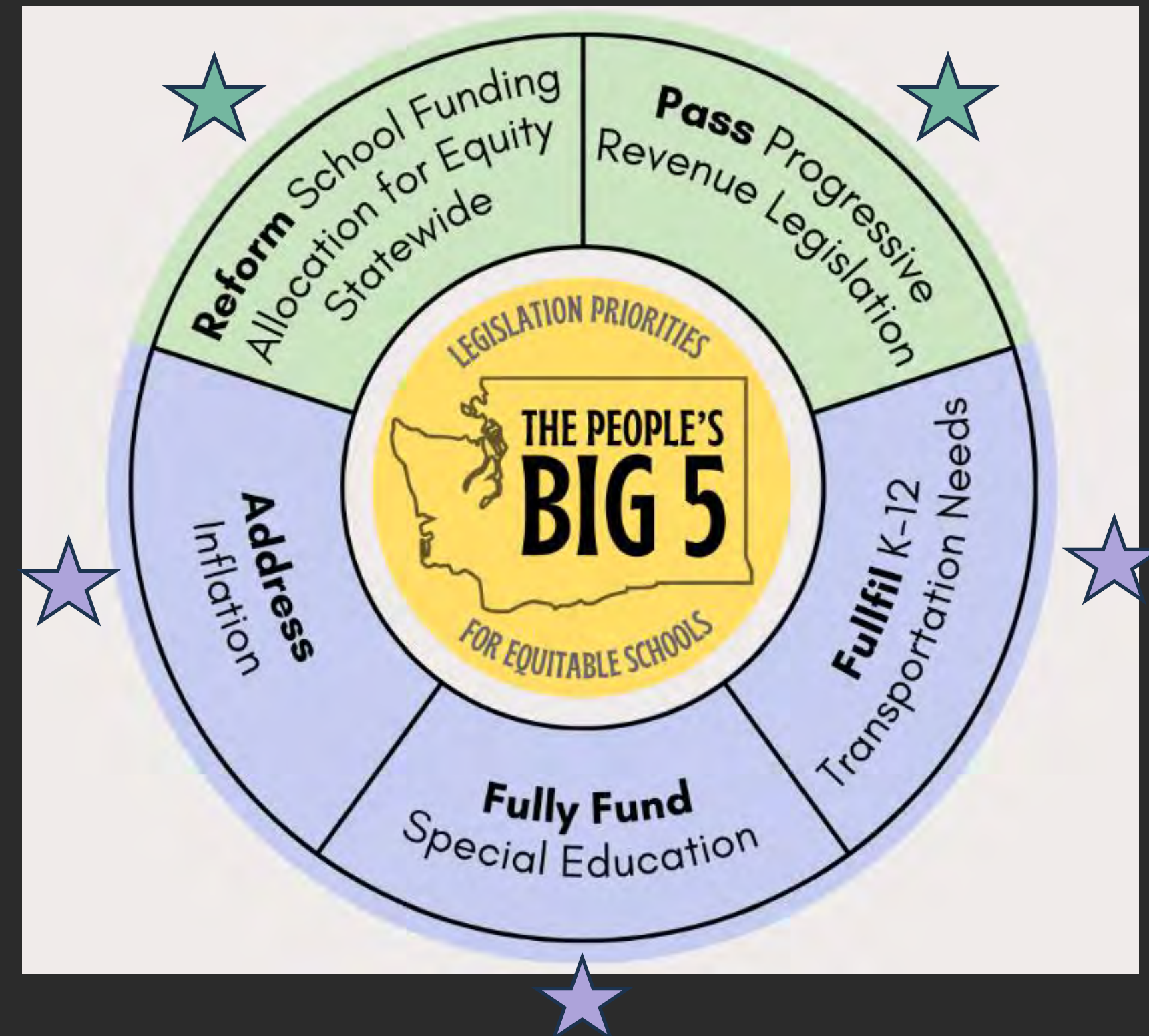
# STATE FUNDING: BIG 5

**Across the state of Washington,** our schools are facing budget shortfalls leading to cuts and closures.

**It's time to change our inequitable tax code** and end the historic underfunding of our state's public schools.

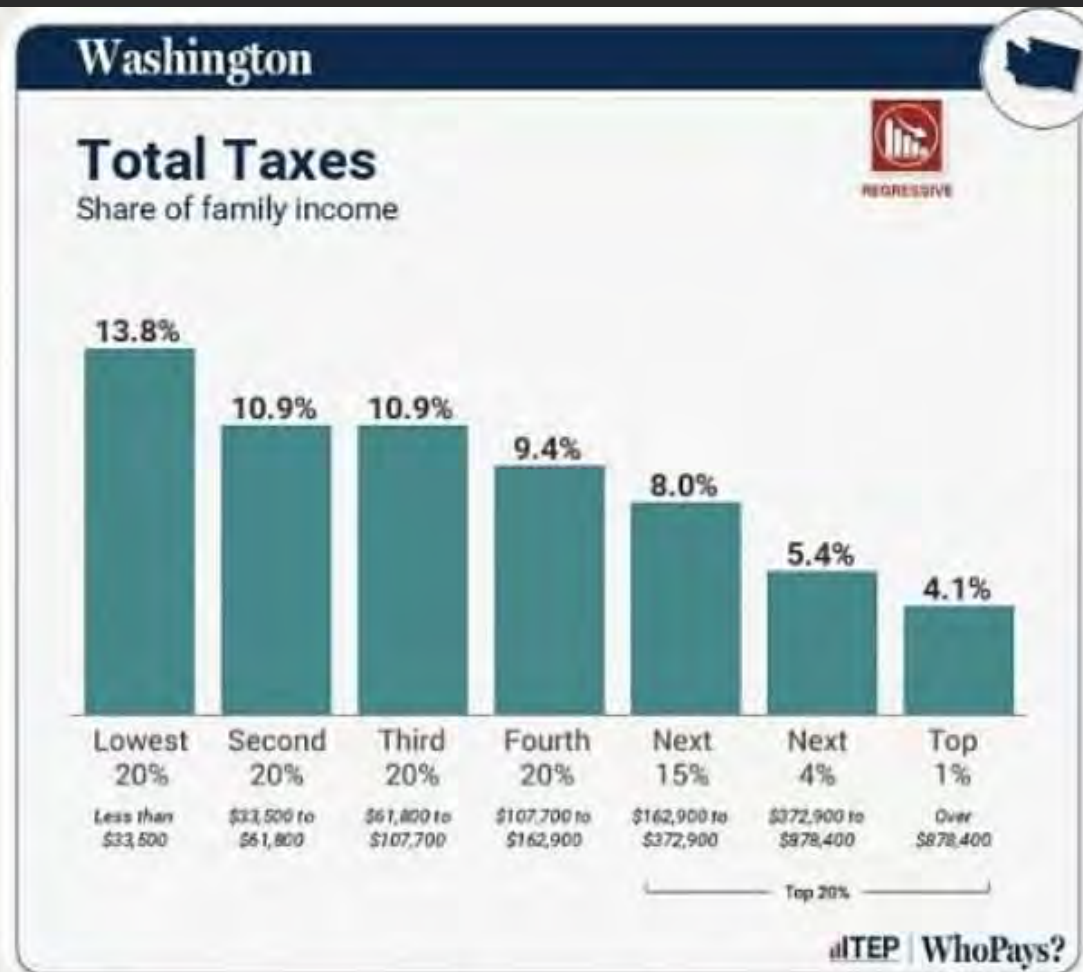
**It's time for:** The People's Big 5

The "Big 5" is a grassroots-led campaign to fully fund our schools by fixing our broken funding formulas and inequitable tax system.



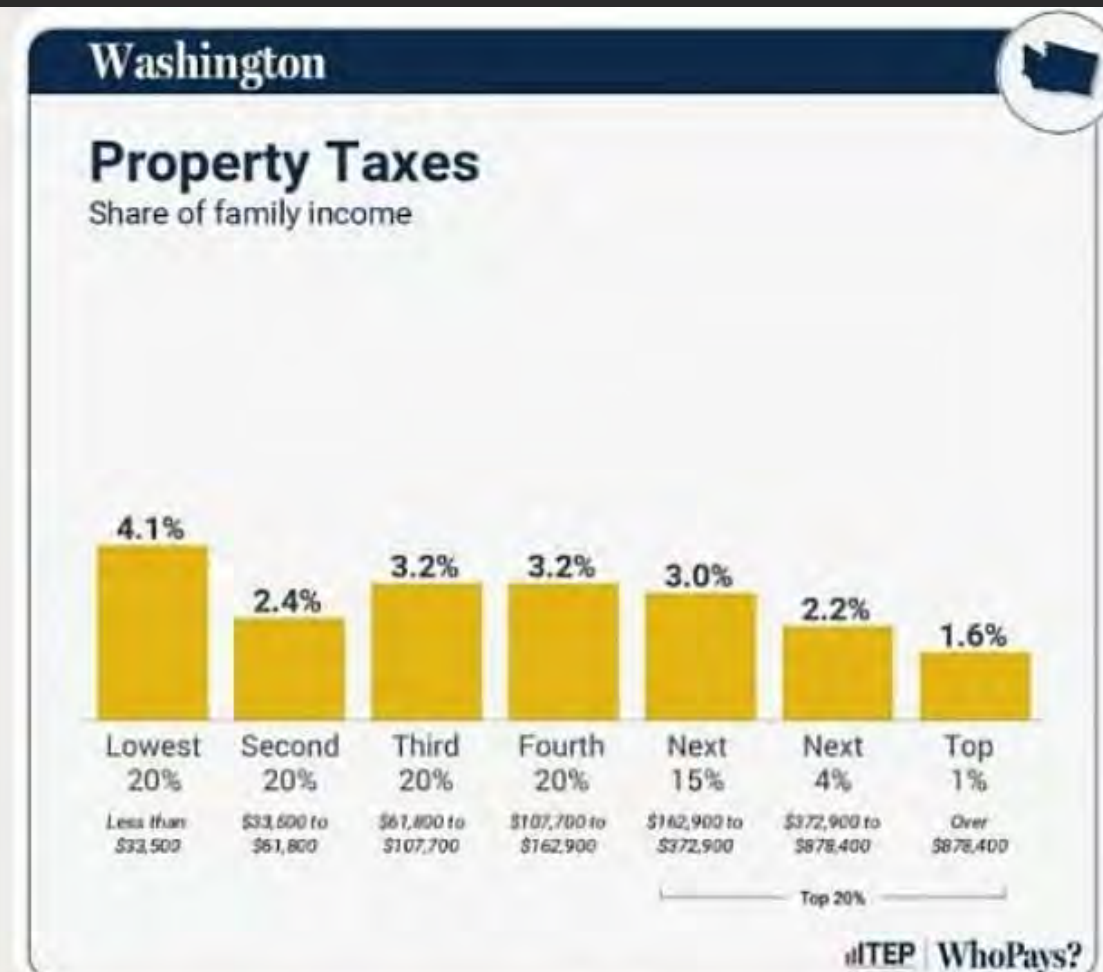


# STATE FUNDING: BIG 5



Families in bottom 20% of income earners, pay 13.8% of their income on taxes, while the top 1% pays 4.1%.

**This is because we have a sales tax and no income tax.**



Our property taxes mirror this regressive trend, with bottom 20% paying 4.1% of income compared to 1.6% for top 1% on property taxes statewide.

# TAKE AWAYS

1. Better understanding of where district money comes from
2. Recognition of the inequities in education funding
3. Desire to dive deeper into something that you learned today
  - Federal funding
  - Local funding
  - State funding
  - PTSA role in school funding



# NEXT STEPS

- Upcoming Sessions
  - Advocating with State Government: May
- Email with questions
  - LWPTSA VP Advocacy: [Advocacy@LWPTSA.net](mailto:Advocacy@LWPTSA.net)
  - Amy Falcone: [afalcone@kirklandwa.gov](mailto:afalcone@kirklandwa.gov)
  - Lindsey Yocum: [sbdistrict5@lwsd.org](mailto:sbdistrict5@lwsd.org)
- Slides posted on LWPTSA website
- Look through resources that will be posted