

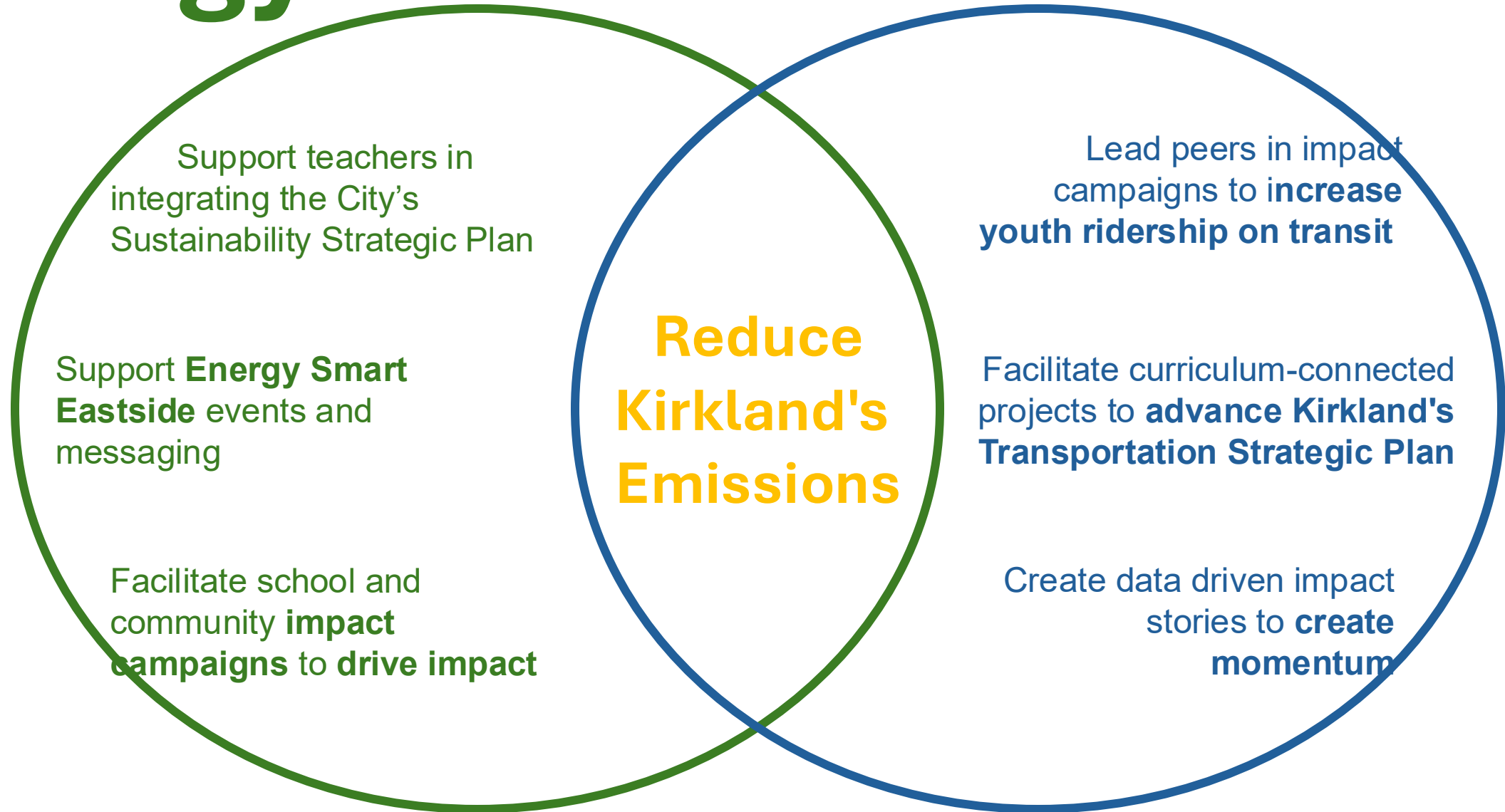
# SUSTAINABILITY AMBASSADORS



**PTSA Sustainability Chair  
Collaboration!**

# Energy

# Mobility





# CITY OF KIRKLAND SUSTAINABILITY MASTER PLAN



## City of Redmond Environmental Sustainability Action Plan

SEPTEMBER 2020

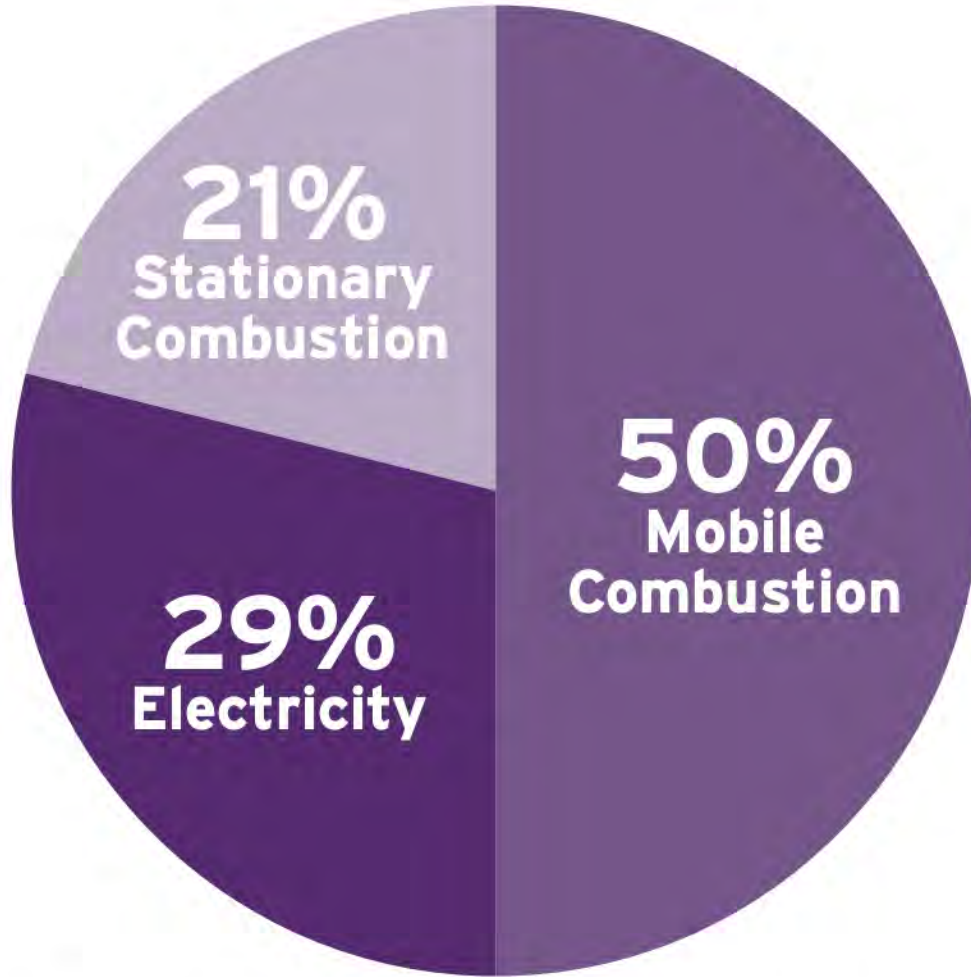
City of Sammamish

## Climate Action Plan

Adopted December 5, 2023



# GHG Sources



*Figure 1. 2017 Kirkland community emissions breakdown by source*

- **50% or 329,000 MTCO<sub>2</sub>e from Mobile Combustion:** Emissions from vehicles traveling in and through Kirkland (gas and diesel).
- **21% or 138,000 MTCO<sub>2</sub>e from Stationary Combustion:** Emissions from natural gas used for heat and other gas appliances.
- **29% or 188,000 MTCO<sub>2</sub>e from Electricity:** Emissions from energy used for buildings and infrastructure such as streetlights, signals, and pump station.





SMART TRANSPORTATION

### How Walkable is My Neighborhood?

HELP US BUILD THE TEMPLATE

SUBMIT YOURS

SUBMIT YOURS

SUBMIT YOURS

SMART TRANSPORTATION

### How I Carpool to School

GET THE TEMPLATE

SIENA'S VIDEO

SUBMIT YOURS

SUBMIT YOURS

SMART TRANSPORTATION

### Why I Get Around by Bus

GET THE TEMPLATE

STEPHANIE'S VIDEO

EVA'S VIDEO

TANUSHRI'S VIDEO

SMART TRANSPORTATION

### Can My Family Buy an EV?

GET THE TEMPLATE

ELA'S VIDEO

LINNIE'S EXAMPLE

SUBMIT YOURS

SMART TRANSPORTATION

### Electric School Bus Math

GET THE TEMPLATE

SUBMIT YOURS

SUBMIT YOURS

SUBMIT YOURS

LOTS MORE BIKES

### I Bike to School

GET THE TEMPLATE

EVA'S EXAMPLE

DIYA'S VIDEO

LOTS MORE BIKES

### My City's Bike Plan

GET THE TEMPLATE

SUBMIT YOURS

SUBMIT YOURS

LOTS MORE BIKES

### Neighborhood Bike Audit

GET THE TEMPLATE

SUBMIT YOURS

SUBMIT YOURS

LOTS MORE BIKES

### Make Your Bike Store. You!!!

GET THE TEMPLATE

KYLIE'S VIDEO

SUBMIT YOURS

LOTS MORE BIKES

### The Loneliest Bike Rack

HELP US BUILD THE TEMPLATE

SUBMIT YOURS

SUBMIT YOURS

CLEAN ENERGY FUTURE

### LED-ing the Way to a Brighter Future

CLEAN ENERGY FUTURE

### Vampire Plug Loads

CLEAN ENERGY FUTURE

### Me and My Thermostat

CLEAN ENERGY FUTURE

### Can My Family Get A Heat Pump?

CLEAN ENERGY FUTURE

### Can My Family Go Solar?

# Impact Project Design & Volunteer Service Hours



SUSTIANABILITY AMBASSADORS

# VOLUNTEER IMPACT

## CERTIFICATE OF COMPLETION

This certificate is proudly presented to

*Your Name Here*

Your High School, Your School District

for creating a meaningful, measurable impact on their community by completing an  
Impact Project that advances their City's Climate Action Plan.

*Peter Donaldson*

PETER DONALDSON  
*Director of Learning*

*Jenna*

JENNA LEVERICH  
*Communications Coordinator*



5

HOURS AWARDED

FACULTY ADVISOR

A photograph of a traffic jam on a multi-lane road. Several cars are visible, with thick white exhaust smoke billowing from their tailpipes, partially obscuring the vehicles behind them. The scene is set during the day with some trees and utility poles visible in the background.

## **GHG Emissions Goal**

**Reduce the average amount  
each person drives by 20% by  
2030 and 50% by 2050**

**How  
much  
do we  
emit?**



# Kirkland's Carbon Commute Count Data



**Juanita High School**

**2.39 lbs of CO2 per capita/day**

Observational Count



**Kirkland Middle School**

**2.11 lbs of CO2 per capita/day**

8 students surveyed (so far)



**Lake Washington High School**

**2.40 lbs of CO2 per capita/day**

184 students surveyed



**Emerson High School**

**3.59 lbs of CO2 per capita/day**

17 students surveyed (so far)



**International Community School**

**3.79 lbs of CO2 per capita/day**

80 students surveyed



# Carbon Commute Count Lesson

- Students collect and analyze data on the daily carbon emissions for all of the different ways that students are commuting to school.
- Subjects: Math, Science, Civics
- Suitable for Middle and High Schoolers



## Carbon Commute Count

How we travel is one of the biggest sources of our carbon footprint as a community. Students collect and analyze school carbon emissions data for all of the different ways that students are getting to school and back.

# Youth ORCA Cards

We received 950 youth ORCA Cards in partnership with King County Metro to distribute to students. Here is how that's going so far:

**Lake Washington HS:** 135 cards registered

**Juanita HS:** 125 cards registered

*Grab a youth ORCA Card for your student at [myORCA.com](https://myORCA.com)*





# Bus Bingo

Be a part of the Climate Solution – by taking the bus! Every mile matters. Mark each completed challenge using a drawing tool or print it out and mark it up. Multiple squares can be completed in a single ride!

Your Name and Email:

Take a bus to somewhere in Bellevue or Redmond	Take a bus route you've never used before	Thank an Operator!	Bus to a community event	Get a friend to ride the bus with you
Bus to Grass Lawn Park (Hint: Routes 255, 245, B Line)	Bus to a Sports Game	Tap your Youth ORCA Card	Take pictures of buses driving 5 different routes	Bus to an after-school event
Bus to get a yummy treat	Bus to Seattle (Hint: Routes 255, 542, 545)	Take a selfie on the bus!	Put your bike on the bus (Be Multi-modal)	Use 2 or more bus routes on a trip
Get on or off a bus at	Take the	Bus to the	Bus to Juanita Bay	Take a ride

- Earn up to 6 volunteer service hours
- Get familiar with your local transportation options
- Help the city reach their goal of reducing driving per capita 20% by 2030 AND growing average weekday transit ridership by 10% each year



I wonder if that is me.



# Carpool to School



# Carpool to School

1. Contact for School Parking Fees:
2. Parking Fee:
3. How was this decided?
4. Number of Spots:
5. Annual Total Revenue from fees:
6. What the revenue is used for:
7. Carpool Spots:
8. Parking Allocation:
9. Challenges:
10. Opportunities:





# Carpool to School



1. **Parking permit fees for single occupancy vehicles DOUBLED**
2. **Parking permit fees for carpools cut in HALF**
3. **RESERVE at least 25% of parking spaces for carpools**



# Bike to School

1. Every Elementary School
2. Every Middle School
3. Every High School
4. May is Bike Month, the 16th is Bike Everywhere day with Cascade Bike Club!
5. Help us track impact!
6. City of Redmond \$1500 challenge!
7. Bigger Better Bike Rack
8. Current and Future Bike Route Planning







- Support Kiwanis and raise money for housing and essential services on the Eastside!
- Earn Volunteer Hours by completing the ride and letting us know
- Get familiar with Kirkland's bike paths and ride more often
- Reduce your carbon emissions

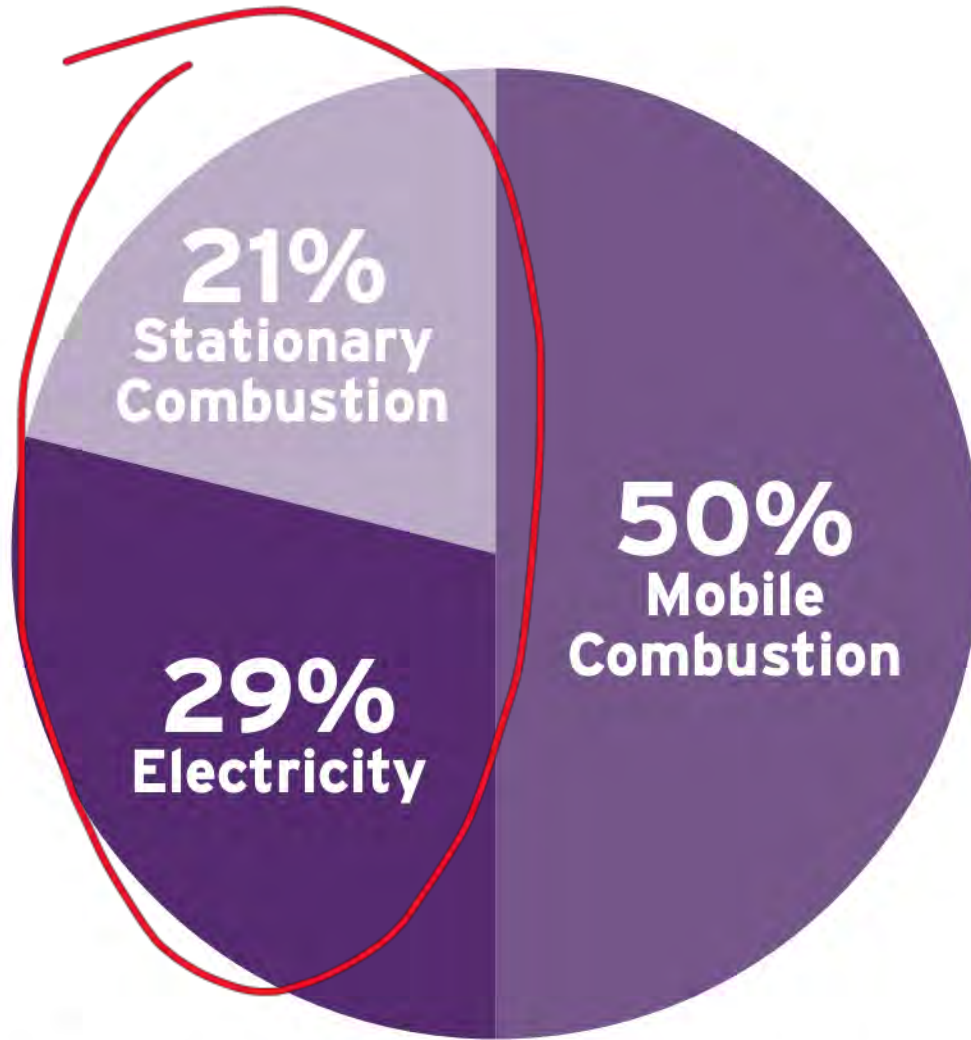


# Electrify Kirkland!





# GHG Sources



*Figure 1. 2017 Kirkland community emissions breakdown by source*

- **50% or 329,000 MTCO<sub>2</sub>e from Mobile Combustion:** Emissions from vehicles traveling in and through Kirkland (gas and diesel).
- **21% or 138,000 MTCO<sub>2</sub>e from Stationary Combustion:** Emissions from natural gas used for heat and other gas appliances.
- **29% or 188,000 MTCO<sub>2</sub>e from Electricity:** Emissions from energy used for buildings and infrastructure such as streetlights, signals, and pump station.



CLEAN ENERGY FUTURE

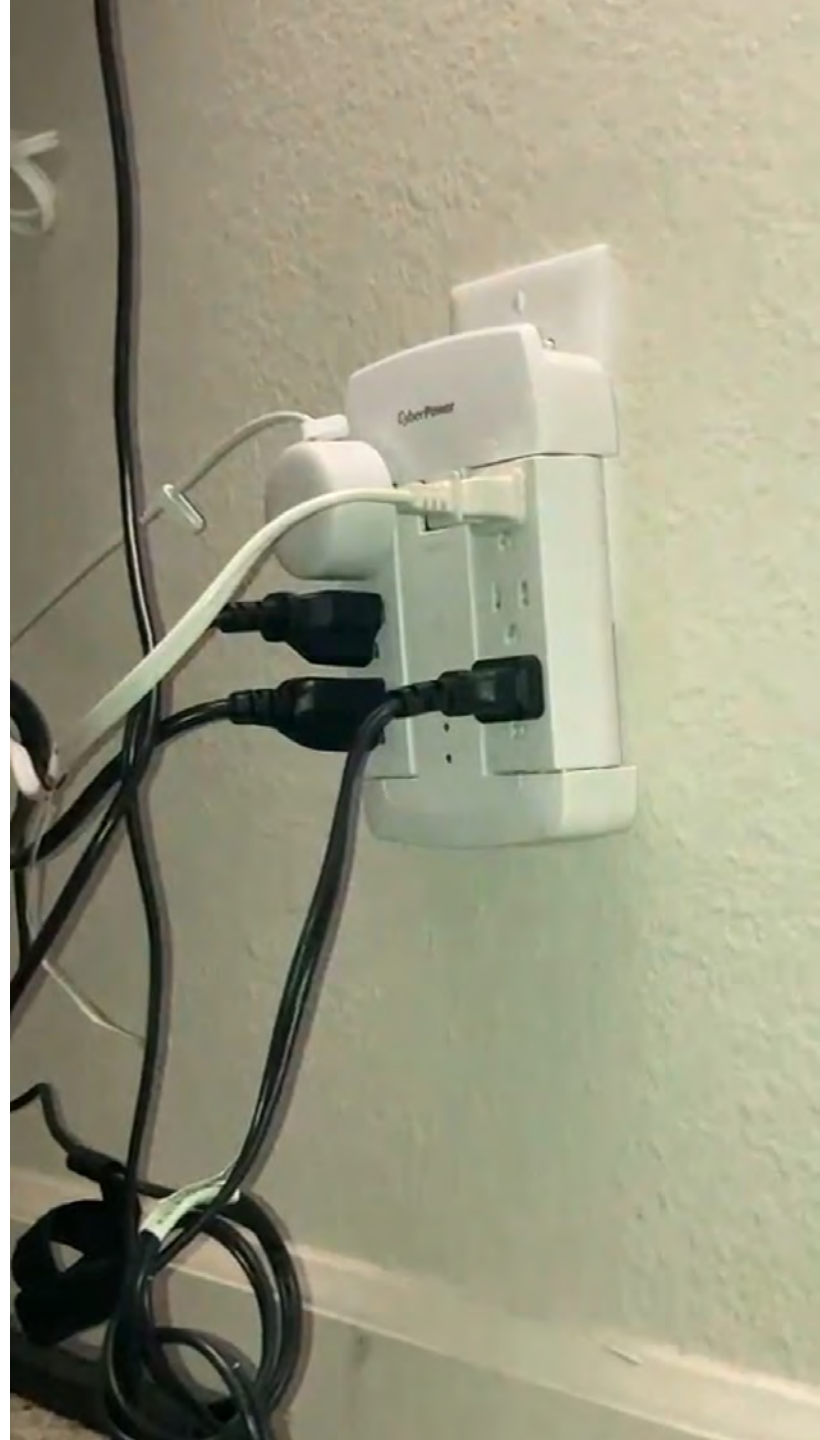
# Vampire Plug Loads

GET THE TEMPLATE

KATELYN'S EXAMPLE

TANUSHRI'S VIDEO

SUBMIT YOURS





CLEAN ENERGY FUTURE

# Me and My Thermostat

GET THE TEMPLATE

SUBMIT YOURS

SUBMIT YOURS

SUBMIT YOURS





CLEAN ENERGY FUTURE

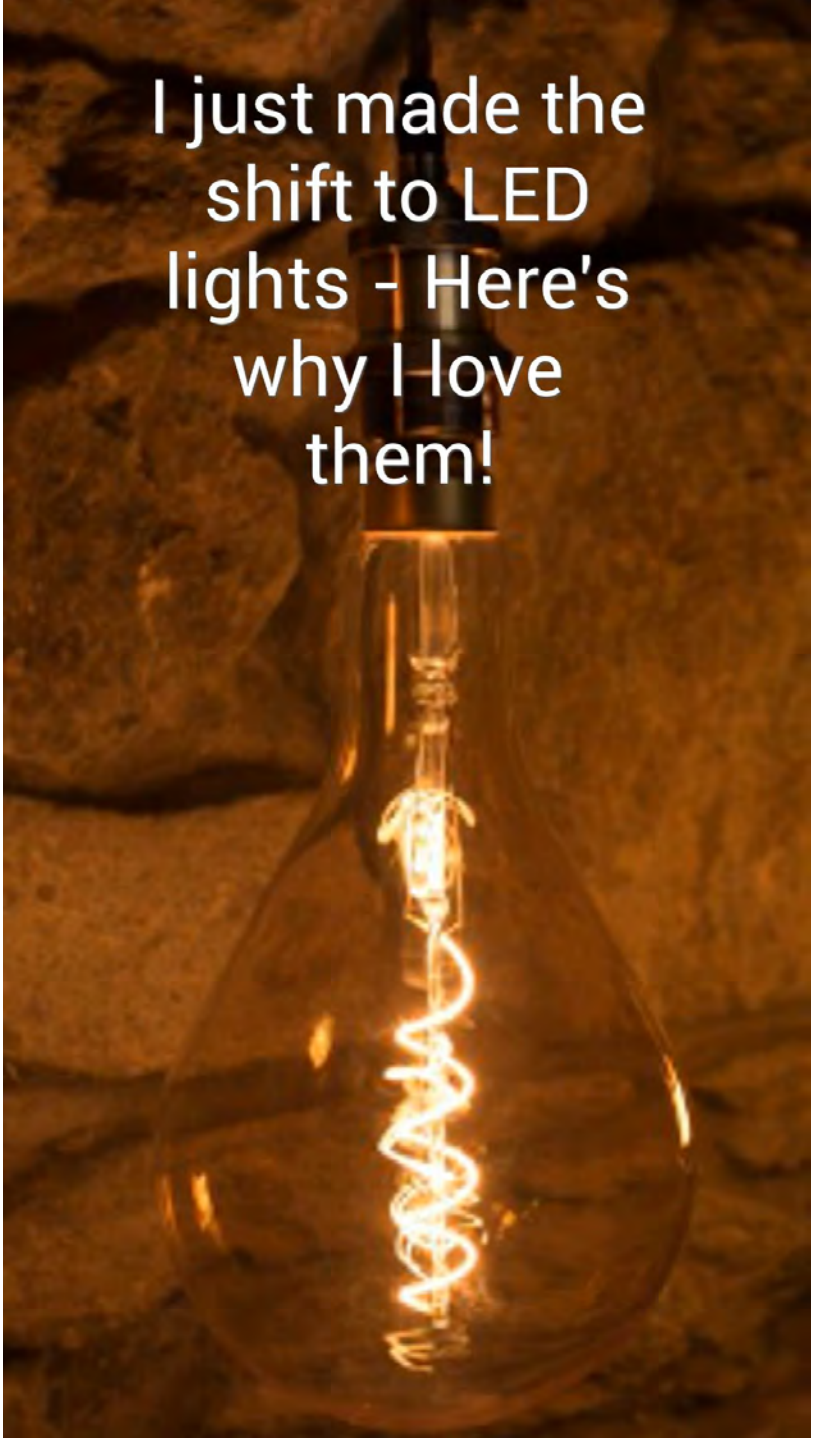
# LED-ing the Way to a Brighter Future

GET THE TEMPLATE

ACHINTYA'S VIDEO

SUBMIT YOURS

SUBMIT YOURS



I just made the  
shift to LED  
lights - Here's  
why I love  
them!



A photograph of a brick wall with a white door. A green banner is at the top, and three dark grey boxes with white text are overlaid on the image.

CLEAN ENERGY FUTURE

# Can My Family Get A Heat Pump?

GET THE TEMPLATE

SUBMIT YOURS

SUBMIT YOURS

SUBMIT YOURS

- Evaluate your home's potential to make the switch
- Calculate your potential carbon savings
- Estimate the potential costs and savings of your heat pump

# Heat Pumps are HotCool Lesson

- Students learn how heat pumps work, where they work, and how they can reduce carbon emissions.
- Subjects: Civics, Chemistry
- Suitable for Middle and High School



## Heat Pumps are Hotcool

In our region, 90% of homes are still heated by natural gas which is a major contributor to our carbon footprint. Electric heat pumps are the answer. They not only heat our buildings in the winter, but cool our buildings in the summer. How does that work?





CLEAN ENERGY FUTURE

# Can My Family Go Solar?

GET THE TEMPLATE

AARON'S VIDEO

SUBMIT YOURS

SUBMIT YOURS

- Evaluate your home's potential to make the switch
- Calculate your potential carbon savings
- Find a workshop near you at [Solarize Eastside](#) and [Energy Smart Eastside](#)

**How can we collaborate to  
drive impact?**



# Follow Us



@ambassadors2050



@ambassadors2050



@ambassadors2050



Sustainability Ambassadors

Subscribe to our mailing list!