



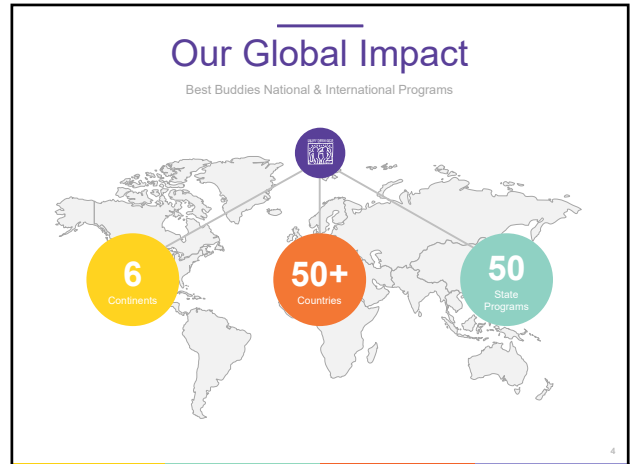
1



2



3



4



5



6

Elementary School Friendship Programs



Designed to foster connections and community between students with and without disabilities, Best Buddies Elementary Schools engage the youngest students in inclusive activities that promote friendship, acceptance, and interaction. Best Buddies Elementary Schools help to model inclusion at a young age before stereotypes are formed while utilizing social-emotional learning tools to support students as they learn, play, and grow together.



7

Middle School Friendship Programs



Best Buddies Middle Schools helps to create a place of belonging, comfort, and fun for students with and without IDD. The Best Buddies program strives to eliminate social isolation and provide engaging and integrated events and activities with the leadership of teachers and students.



8

High School Friendship Programs



With an additional emphasis on leadership training, the Best Buddies High School program provides leadership development and skill building for students with and without disabilities to manage their chapter and develop the skills to lead a movement of inclusion in their school community.



9

What Makes Friendship Work



These programs build one-to-one friendships between people with and without IDD, offering social interactions while improving the quality of life and level of inclusion for a population that is often isolated and excluded. Through their participation, people with IDD form meaningful connections with their peers, gain self-confidence and self-esteem, and share interests, experiences and activities that many other individuals enjoy.

- One-to-one model
- Friendship based, not mentor
- Group events for engagement
- Integrated leadership opportunities for students

10

What You Need to Start a Chapter



SCHOOL ADMINISTRATION APPROVAL



AT LEAST ONE TEACHER TO PROVIDE GUIDANCE



FUN AND INCLUSIVE ACTIVITIES



CHAPTER MEMBERS WITH AND WITHOUT IDD



OPPORTUNITIES FOR FRIENDSHIP



PASSION FOR OUR MISSION

11

11

Leadership Team

Leadership Opportunities



ADVISOR(S)

The chapter may have more than one advisor. The advisor provides support to chapter by working closely with chapter president, and Best Buddies staff. Must be a member of the school's faculty or staff.



CHAPTER PRESIDENT

Responsible for chapter management. This includes selecting and leading officers, planning meetings, communicating with teachers, parents, and buddy pairs, and ensuring fun and success.



OTHER OFFICERS

Other officer roles include Vice President, Secretary, Treasurer, and any other position you see fit. These officers will help plan events and support the chapter president in keeping the club on track.

12

12

Inclusive Meetings and Activities



Best Buddies chapters are expected to find a consistent meeting time and place to hold activities.

Activities provide all members a place and time to connect. Fun and inclusive activities will allow for friendships to develop over the course of the year.

Chapter goals include raising awareness, engaging the community, empowering and interacting with individuals with IDD.

Friendship program Participants at the Best Buddies Leadership Conference

13

Online Resources



BB360

Best Buddies 360

- Membership Applications
- Member Roster
- Calendar
- Impact Reports
- Mid-Year and Annual Reports
- Chapter President Applications

BBU

Best Buddies University

- Best Buddies International Toolkit
- Best Buddies Basics
- Videos and Presentations
- Tax ID Form
- Learn about Integrated Employment, Leadership Development, and Inclusive Living

BBWA

Chapter Leaders Toolkit

- Resources
- Templates
- Trainings and Guides

14

Best Buddies Staff Support

We are here for you every step of the way!



15

Why Best Buddies?

What does Best Buddies do differently that sets our programs apart from other disability organizations?



Inclusive Opportunities

Inclusion starts here with our own programs and volunteer opportunities. Best Buddies is a place for everybody!



Life Cycle

Best Buddies programs and volunteer opportunities begin in elementary school and continue through adulthood and beyond!


Volunteer Centric

At Best Buddies, volunteers lead the way! Without you, we couldn't accomplish our mission of making the world an inclusive place!


16

Make It Official!

- 01 ASK AND RECEIVE SCHOOL ADMINISTRATION APPROVAL
- 02 FIND AN ADVISOR(S)
- 03 RECRUIT STUDENTS TO BE CHAPTER LEADERS (OPTIONAL)
- 04 SIGN BEST BUDDIES CHAPTER AGREEMENT AND SEND IT BACK TO THE PROGRAM MANAGER



17



[f](#)
[t](#)
[i](#)
[y](#)

MAKE A FRIEND | DONATE | VOLUNTEER

BESTBUDDIES.ORG

18